


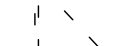



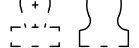
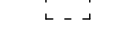
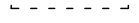
THIS DRAWING MUST NOT BE SCALED.
 THE GENERAL CONTRACTOR SHALL VERIFY ALL DIMENSIONS, DATINGS, AND LEVELS PRIOR TO COMMENCEMENT OF WORK. ALL ERRORS AND OMISSIONS TO BE REPORTED TO NUMBER TEN ARCHITECTURAL GROUP BEFORE PROCEEDING.
 VARIATIONS AND MODIFICATIONS TO WORK SHOWN ON THESE DRAWINGS SHALL NOT BE CARRIED OUT WITHOUT WRITTEN PERMISSION OF NUMBER TEN ARCHITECTURAL GROUP.
 THIS DRAWING IS THE EXCLUSIVE PROPERTY OF NUMBER TEN ARCHITECTURAL GROUP AND THE COPYRIGHT IN THE SAME BEING RESERVED TO THEM. IT MAY BE REPRODUCED ONLY WITH THE PERMISSION OF NUMBER TEN ARCHITECTURAL GROUP, IN WHICH CASE THE REPRODUCTION MUST BEAR THEIR NAME.

REVISED/ISSUED/PLOTTED	DATE
ISSUED FOR DECONSTRUCTION	2017/03/24
REVISION 1	2017/06/26

GENERAL DEMOLITION NOTES:

- COORDINATE EXISTING PIPING AND DUCTWORK TO REMAIN WITH MECHANICAL.
- COORDINATE EXISTING POWER, SYSTEMS & LIGHTING TO REMAIN WITH ELECTRICAL.
- PATCH AND/OR REPAIR ALL SURFACES TO REMAIN AFFECTED OR DAMAGED BY DEMOLITION TO MATCH ADJACENT SURFACES.
- THE CONTRACTOR SHALL RETURN TO THE CITY (IN GOOD CONDITION) ALL REUSABLE ITEMS THAT THE CITY ELECTS TO RETAIN FROM THE DEMOLITION AND STORE AS DIRECTED BY THE CITY.
- THE CONTRACTOR SHALL NOTIFY THE CONTRACT ADMINISTRATOR OF ALL CONDITIONS UNCOVERED DURING DEMOLITION WHICH MAY ADVERSELY AFFECT THE INSTALLATION OR PERFORMANCE OF FUTURE CONSTRUCTION OR FINISHES.
- ALL FLOORING MATERIALS TO BE REMOVED TO EXPOSE CONCRETE SUBFLOOR.
- CONFIRM EXTENT OF CEILINGS ON SITE.

DEMOLITION LEGEND

-  EXISTING DOOR TO REMAIN
-  EXISTING DOOR TO BE REMOVED
-  EXISTING WALL TO REMAIN
-  EXISTING WALL TO BE REMOVED
-  EXISTING LAVATORY TO BE REMOVED
-  EXISTING WATER CLOSET TO BE REMOVED
-  EXISTING URINAL TO BE REMOVED
-  EXISTING MILLWORK TO BE REMOVED


DEMOLITION KEYNOTES

- LOADING DOCK WALLS & EQUIPMENT TO REMAIN
- CHAIN LINK FENCE TO BE REMOVED
- REMOVE AND DISCARD ALL FLOOR-MOUNTED METAL RACKING
- REMOVE AND DISCARD ALL REMAINING FURNITURE & FURNITURE SYSTEMS
- REMOVE ALL GYPSUM BOARD, STUDS AND INSULATION BACK TO CONCRETE BLOCK WALL
- REMOVE ALL PLUMBING FIXTURES, TOILET PARTITIONS & MILLWORK
- REMOVE BASEBOARD HEATERS
- COMMUNICATIONS ROOM & EQUIPMENT TO REMAIN
- SPRINKLER ROOM & EQUIPMENT TO REMAIN
- REMOVE SIGNAGE & DECALS, TYPICAL
- REMOVE EXISTING CONCRETE STAIR. FILL SURFACE WITH GRAVEL TO MATCH LEVEL OF ADJACENT GRADE
- REMOVE EXISTING TOWER
- REMOVE CCTV FIXTURE
- REMOVE EXISTING PA SYSTEM
- REMOVE INOPERABLE CEILING FANS
- REMOVE EXISTING STAIR
- REMOVE BLINDS
- REMOVE OVERHEAD SHUTTER

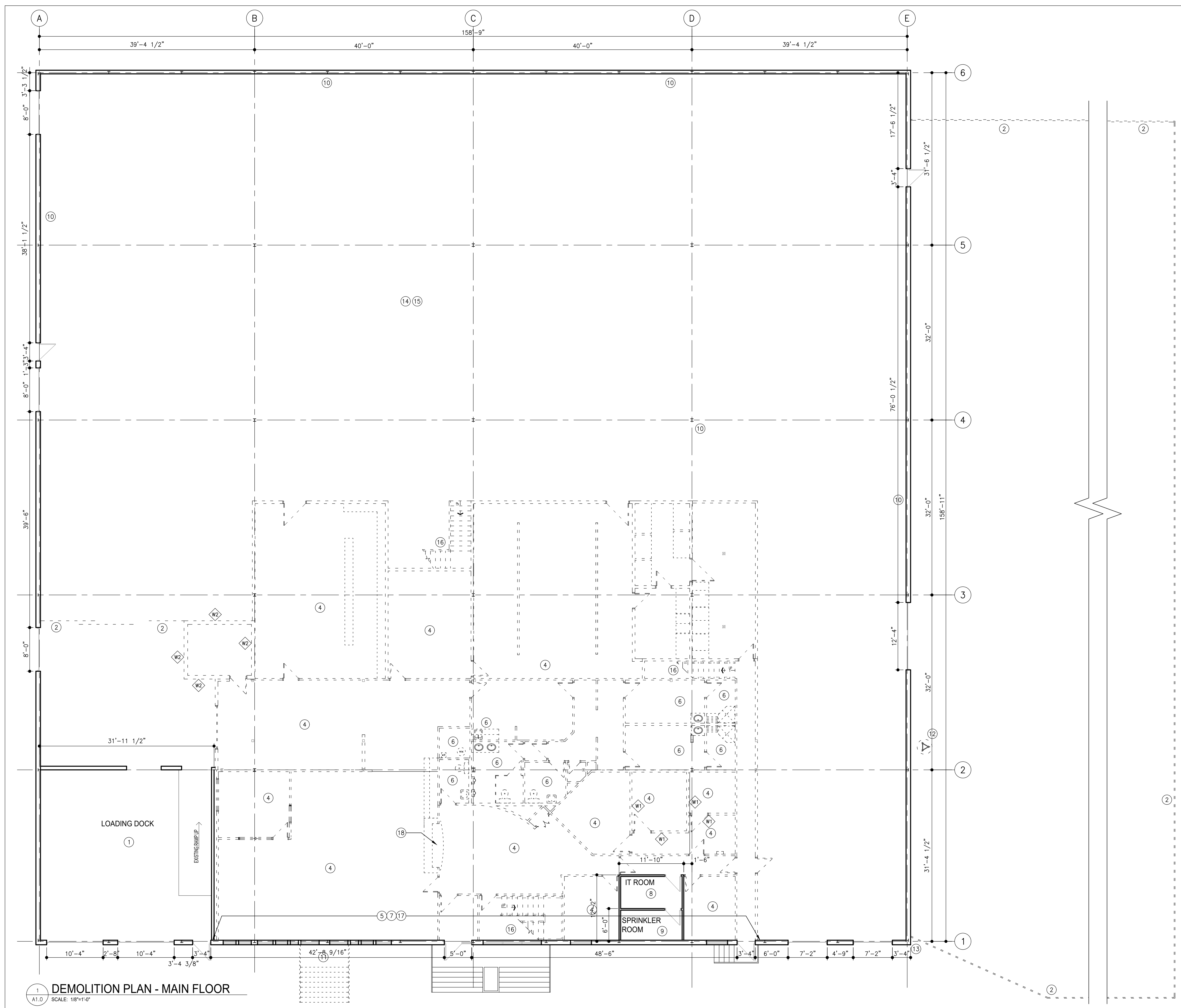
number TEN architectural group
 Winnipeg Office 204.942.0981
 Victoria Office 250.360.2106
 architecture • interior design • planning

850 EMPRESS BUILDING UPGRADE
 850 EMPRESS STREET, WINNIPEG, MB
 project
 DEMOLITION PLAN - MAIN FLOOR
 sheet title

consultant

seal
 drawn by: NP
 checked by: CKL
 project no. 2016094
 scale: 1/8"=1'-0"
 date: Jun 26/17
 sheet no. A1.0



1 DEMOLITION PLAN - MAIN FLOOR
 SCALE: 1/8"=1'-0"